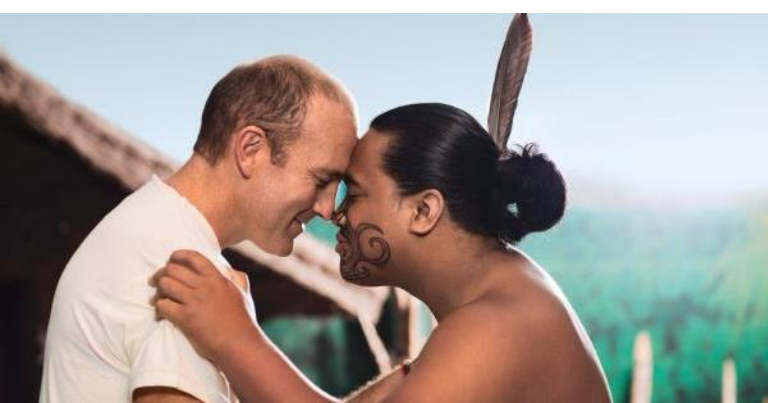


# 發掘新西蘭最北端迷人美景及毛利文化起源 | 奧克蘭+派希亞 Auckland+Paihia

6日3夜 [出發日期: 至2020年3月31日] | 6 Days 3 Nights [Travel period: Till 31Mar2020]



發掘新西蘭北端迷人之處，漫步前往屹立于海平面上290米岬角之巔的雷因格海角(Cape Reinga)燈塔、穿越懷波瓦森林(Puketi Kauri Forest)尋找世界上最大的貝殼杉樹(kauri trees)、高速穿行於90英里海灘(90 Mile Beach)及了解新西蘭毛利文化的發源地

1晚入住奧克蘭(Auckland)酒店 – Hotel Grand Chancellor Auckland City

[www.grandchancellorhotels.com/hotel-grand-chancellor-auckland-city/](http://www.grandchancellorhotels.com/hotel-grand-chancellor-auckland-city/)

🏠 Studio Suite 🍳 早餐HK\$150 (每人)

2晚入住派希亞(Paihia)酒店 – Kingsgate Hotel Autolodge Paihia

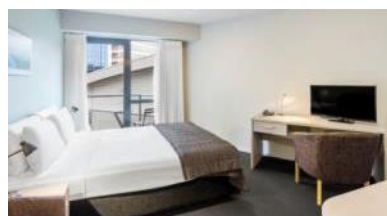
[www.millenniumhotels.com/en/bay-of-islands/kingsgate-hotel-autolodge-paihia/](http://www.millenniumhotels.com/en/bay-of-islands/kingsgate-hotel-autolodge-paihia/)

🏠 Standard Room 🍳 早餐HK\$150 (每人)

9月: 10-3月:

每人/成人佔半房 **6,870 + 7,190 +**

- ✓ 來回新西蘭航空經濟客位機票  
Round trip economy class air ticket on NZ
- ✓ 1晚奧克蘭酒店 + 2晚派希亞酒店住宿  
1 night Auckland + 2 nights Paihia hotel accommodation
- ✓ 島嶼灣及90哩海灘觀光遊  
Cape Reinga and 90 Mile Beach Tour
- ✓ 奧克蘭與派希亞來回巴士接送  
Seat-in-coach transfer between Auckland & Paihia



※ 套票以淡季價格計算，於旺季、週末及假期前夕或大型節日期間出發，需另付附加費。詳情向本社職員查詢作準。

AIR NEW ZEALAND

2人成行 GV2 訂位代號 Booking Class : G

有關套票的條款及細則請參閱最後一頁 Page 1 of 3

Tour Code : NZAKLBO101 Ref No. : 40133 (Superseded Ref. No : 39750) KHL/11Sep19/300

WESTMINSTER  
Travel Ltd.  
西敏旅行社



Westminster Travel Limited (A member of CTM, listed on the ASX)

☎ 2313 9800

✉ itravel@hkwtl.com

📍 leisure.westminstertravel.com

Licence No. 350488



# 發掘新西蘭最北端迷人美景及毛利文化起源 | 奧克蘭+派希亞 Auckland+Paihia

6日3夜 [出發日期 : 至2020年3月31日] | 6 Days 3 Nights [Travel period : Till 31Mar2020]



## 島嶼灣及90哩海灘觀光遊 Cape Reinga and 90 Mile Beach Tour

Cape Reinga (Te Rerenga Wairua) is a vast and untouched region that is rich in Maori culture and tradition.

First stop is at Puketi Kauri Forest, where with ancient and majestic giant kauri trees and native bush. Then travel to the north, a trip showcases the rolling hills of Northland's rural countryside, breath-taking coastal views and native forest.

90 Mile Beach is another highlight where drive along the sand as waves crash beside the custom-built coach, and feel the sand when digging shellfish (conditions permitted). Don't be alarmed when driver takes the bus up Te Pahi Stream towards the mountainous sand dunes. Also, clambering up then sand-boarding down the dunes will give your legs a stretch and get your heart pumping with excitement.

The tour carries onto Cape Reinga, the northernmost point of New Zealand. Enjoy spectacular panoramic views, visit the iconic light house, and see the point where the Tasman Sea and the Pacific Ocean come crashing together.



AIR NEW ZEALAND 

2人成行 GV2 訂位代號 Booking Class : G

有關套票的條款及細則請參閱最後一頁 Page 2 of 3

Tour Code : NZAKLBOI01 Ref No. : 40133 (Superseded Ref. No : 39750) KHL/11Sep19/300

WESTMINSTER   
Travel Ltd.  
西敏旅行社

Westminster Travel Limited (A member of CTM, listed on the ASX)

☎ 2313 9800

✉ itravel@hkwtl.com

📍 leisure.westminstertravel.com

Licence No. 350488



# 發掘新西蘭最北端迷人美景及毛利文化起源 | 奧克蘭+派希亞 Auckland+Paihia

6日3夜 [出發日期: 至2020年3月31日] | 6 Days 3 Nights [Travel period: Till 31Mar2020]



## 新西蘭航空奧克蘭機票附加費表 NZ Auckland Airfare Surcharge

出發日期:

2019年9月11日 – 2020年3月31日

Travel Period: 11Sep2019 – 31Mar2020

2 人成行 GV2 (min. 2 adults)					
Departure	Adult	Child	Booking Class	Ticket Validity	
Economy	11Sep-09Dec, 24Dec-02Jan & 27Jan-31Mar	---	---	G	3 – 14 days
	10-23Dec & 03-16Jan	\$2710	\$2040	L	
	17-26Jan	5090	3820		
Premier Economy	11Sep-09Dec, 24Dec-16Jan & 27Jan-31Mar	9090	6820	A	
	10-23Dec	11050	8290		
	17-26Jan	11990	9000		
Business Premier	11Sep-31Mar	27750	28680	J	

**NOT valid on NZ3000-4990, 7000-7999, 9000-9999**

### Price Includes:

- Round trip economy class air ticket on NZ
- 3 nights hotel accommodation
- Cape Reinga and 90 Mile Beach Tour
- Seat-in-coach transfer between Auckland & Paihia
- HK\$100,000 Travel Insurance [Zurich Insurance (Hong Kong) 24-hour emergency hotline+852-2886-3977]
- 0.15% TIC Levy

### Child price:

- Twin sharing as adult price less: \$930
- Child sharing room without bed & meals: \$4200

### Terms & Conditions:

- Package price is per person (in HK\$) and valid between **11Sep19-31Mar20**; the whole journey must be completed by 31Mar20
- Booking class: G Ticket validity: 3-14 days
- Minimum 2 adults travelling together on same outbound & inbound flights, booking must be reserved under the same record locator (PNR) for all passengers
- Twin room is based on 2 single beds or 1 double bed
- Airport tax, HK security charge & fuel surcharge (if any) are not included
- A non-refundable deposit of HK\$1000 per person required upon reservation
- Full payment must be made after confirmation with no refund
- Upon confirmation, any amendment is subject to company's discretion
- All prices and conditions are subject to change without prior notice
- Check whether the Security Bureau has issued any [Outbound Travel Alert](#) for your destination before firming up your travel plan to ensure personal safety
- A service fee of HK\$30 will be collected for each ticket issued

### 費用包括:

- 來回新西蘭航空經濟客位機票
- 三晚酒店住宿
- 島嶼灣及90哩海灘觀光遊
- 奧克蘭與派希亞來回巴士接送
- HK\$100,000旅遊保險[蘇黎世保險(香港) 24小時緊急支援服務+852-2886-3977]
- 0.15%旅遊業賠償基金

### 小童價錢:

- 佔床收費按成人減收: \$930
- 小童不佔床(不包早餐)收費為: \$4200

### 條款及細則:

- 以上套票價錢以每成人計算。有效日期: 2019年9月11日至2020年3月31日; 酒店入住須於2020年3月31日或之前完成
- 訂位代號: G 機票有效期: 3-14日
- 來回程均要最少兩位成人同行。訂位時必須最少兩位客人在同一個PNR內
- 雙人房之房種2張單人床或1張雙人床
- 費用並未包括兩地機場稅、香港機場保安稅及燃油附加費(如適用)
- 訂位時須繳交訂金港幣每位\$1000
- 餘款需於機票及酒店確認後繳付及恕不退還
- 於機票及酒店確認後, 如需更改本公司擁有最終決定權
- 所有費用如有更改, 恕不另行通知
- 為確保自身安全, 旅客在落實行程前, 應留意保安局有沒有對目的地發出[外遊警示](#)
- 每發出機票乙張, 收取港幣\$30服務費

AIR NEW ZEALAND

Page 3 of 3

Tour Code: NZAKLBOI01 Ref No.: 40133 (Superseded Ref. No.: 39750) KHL/11Sep19/300

WESTMINSTER  
Travel Ltd.  
西敏旅行社

Westminster Travel Limited (A member of CTM, listed on the ASX)

2313 9800

ittravel@hkwtl.com

leisure.westminstertravel.com

Licence No. 350488